

STEICO *bitumen*

Expansion Joint Filler Board
Protection Board

Solution for concrete work and
water proofing membranes

With 10 %, 20 %
or 35 % bitumen

| APPLICATION AREAS

Expansion joint filler for concrete slab
and wall construction

Protection board for pressure-sensitive layers

Board for wet screed and
dry screed applications

- Produced and supervised according to current European and American standards
- Standard sizes and customised panels and strips
- Easy processing with common tools
- Production certified according to ISO 9001: 2015

For more information please visit our website at www.steico.com



STEICO SE – the group for...

wood fibre insulation and building products

The STEICO Group is the world leader in the manufacture and sale of wood fibre insulation materials and employs around 1600 people.

The headquarters of STEICO SE are located in Feldkirchen near Munich (Germany) to manage the group, sales, technical advice and research and development. Production takes place at three European sites – Czarnków (Poland), Czarna Woda (Poland) and Casteljaloux (France). STEICO group also has two sales offices in France and the UK.



All the products manufactured by STEICO are certified under the banner of the FSC® (Forest Stewardship Council®) to guarantee our commitment to producing environmental and ecological products.

Our knowledgeable staff and technical support team are always available to offer you the best advice on products and applications. In addition, we work closely with our distributors to provide local expertise and on site support.

PRODUCT DESCRIPTION

STEICO's Expansion Joint Filler Boards and STEICO's Protection Boards are woodfibre softboards impregnated with bitumen. This process gives the boards a high water resistance, high compression strength and an extraordinary long durability.

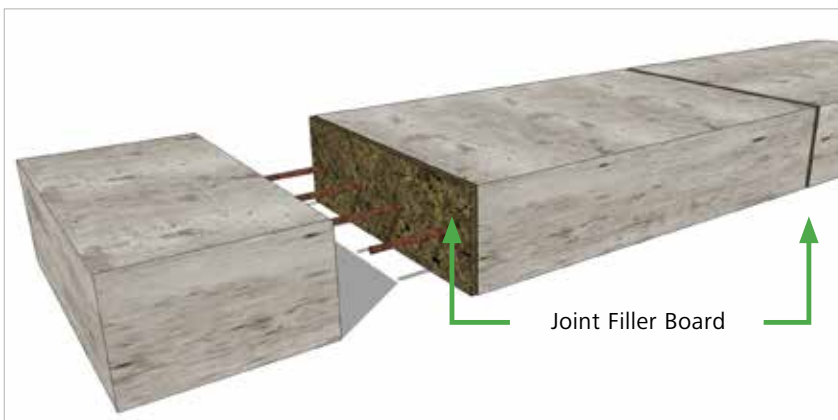
STEICObitumen is only manufactured out of European timber from strictly controlled and sustainable forests. In its application as an Expansion Joint Filler Board, STEICO bitumen boards offer the highest quality and can be used in all types of Expansion Joints. Typically it is used in North America, the UK, the Middle East and Asia and thus it complies with the ASTM and the British Standards.

STEICO's Protection Board complies with the same standards and has the same high quality features. It is used as a protection board for membranes in waterproofing technology applications.

STEICO's high standards in both product development and production ensure products of the highest quality.



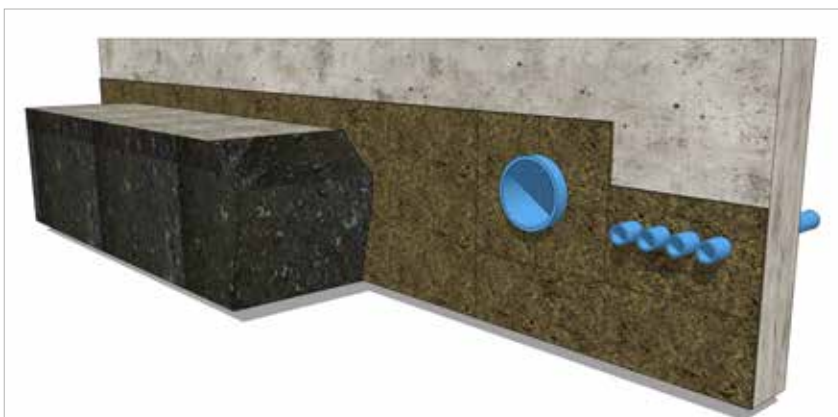
EXPANSION JOINT FILLER BOARD



Filler Boards in concrete slabs:

- Airport aprons and taxiways
- Roads
- Retail parks
- etc.

PROTECTION BOARD



Protection Boards to waterproofing membranes:

- Basements
- Retaining walls
- Lift pits
- etc.

INGREDIENTS

Wood fibre, bitumen, water repellent additives, paraffin

HANDLING

STEICObitumen should be stored flat and dry on a level surface

Transport packaging should only be removed when the pallet is on a safe and level surface

Protect edges from damage

Carry single boards vertically

One way pallets

REFERENCES

Mall of the Emirates
Dubai Festival City - Development
Dubai/UAE

Abu Dhabi YAS Island
Abu Dhabi/UAE

King Abdullah Financial District
King Saud University
Kingdom of Saudi Arabia

Bahrain International Circuit
Bahrain

Oman Convention & Exhibition Centre
Oman

Barwa Commercial Avenue
New Doha International Airport Project
Qatar

Regional connector Transit Corridor, LA
McCarran Airport, Las Vegas
Philadelphia PA Airport
USA

Heathrow Airport, London
Olympic Stadium, London
M25 Motorway, London
United Kingdom

FORMATS STEICObitumen

available thickness [mm]	available dimensions [mm / ft.]		
	8, 10, 12, 15, 18, 19, 25	1220 * 2440 4' * 8'	1220 * 2200 4' * 7'2"

Cut strips according to specifications

CHARACTERISTIC VALUES STEICObitumen

Produced according to	EN 13986
Porous wood fibre insulating board according to	EN 622-4
Fire class according to EN 13501-1	E
Bitumen content [%]	10 / 20 / 35
Density [kg/m ³]	Approx. 230 (10 %, 20 % bitumen) at least 310 (35 % bitumen)
Complies with ASTM D 1751-04	For the requirements of
Test procedure according to ASTM D 545-99	compression / extrusion / recovery

SPECIFICATION STEICObitumen

Compositin	for nominal thickness of < 13 mm	for nominal thickness of ≥ 13 mm	
Board Compositon (ASTM D 1751-04)	Ligno-cellulosic fibres, asphalt		✓
Resistent to handling (ASTM D 1751-04)	Must not deform or break under normal handling		✓
Stress required to compress the test specimens to 50% of normal thickness (ASTM D 1751-04)	P ≤ 8618 kPa	689 kPa ≤ P ≤ 5175 kPa	✓
Weight loss during 50 % compression (ASTM D 1751-04)	≤ 3 %		✓
Recovery within 10 min after 50 % compression (ASTM D 545-99)	≥ 70 %		✓
Extrusion at 50 % compression (ASTM D 545-99)	≤ 6,4 mm		✓
24 h Volume water absorption (ASTM D 545-99)	≤ 20 %	≤ 15 %	✓

Complies with the British Specification for Highway Works Volume 1, Series 1000 Road Pavements – Concrete Materials. clause 1015 Joint Filler Board for Weathering, Compression and Recovery and Extrusion.

Complies with the British Specification 033 – Pavement Quality Concrete for Airfields – Appendix C.1 – C.5 – Tests for Manufactured Joint Fillers for Weathering, Compression and Recovery and Extrusion.



Quality
Management
ISO 9001:2015

STEICO
engineered by nature

Your STEICO partner

www.steico.com